



# **The Dale Lasater Ranch 72nd Annual Foundation Beefmaster Bull Sale**

September 10th & 11th, 2021

## **Selling:**

**17 - 16 month old Bulls**

**10 - Retired Herd Sires**

**33 - 2 yr old Bulls**

**21 - Ranchlands Bulls**

**7 - Ranchlands Bulls**

The Dale Lasater Ranch

P.O. Box 38

Matheson, CO 80830

Phone (719) 541-BULL (2855)

DaleLasaterRanch.com

Home of the Foundation Herd of the  
Beefmaster Breed  
(80 years in the making)



Dear Friends,

I hope it has been a good 2021 for all of you. We have been very busy with projects on both ranches; fences, pipelines, spring development and water troughs.

This 84-year-old genetic experiment is stronger than ever. We have an excellent line up of herd sires. I am excited to be selling 4-year-old retired herd sires; as turning the genetic crank more quickly should be a positive for this cow herd.

We had a good spring on both ranches then the summer turned off dry. We have just now begun to receive fall moisture...I hope we avoid a freeze for about 30 days.

We have a great line up of bulls from the Phillips family to flesh out the offering as we move to selling all two year old bulls next year.

At the sale in 2022 we hope to have bulls from a few more like minded Beefmaster Breeders.

Thanks to all who were able to make the field day in Julesburg.

Abrazos



**The Dale Lasater Ranch  
Foundation Beefmasters  
72nd Annual  
Field Day and Production Sale  
September 10 & 11, 2021**

**Bull Sale and Cow Sale at Remuda Pens,  
located one mile East of  
Matheson, Colorado**

Office Phone (719) 541-Bull (2855)  
Alex Lasater (210) 872-1117 Cell

**AUCTION BULLS WILL SELL IN  
CATALOG LOT ORDER**

There is a floor price of \$2,600 on the 2 year  
old bulls.

<b>Any bull not sold during the auction will be available October 1st, 2021 Private Treaty</b>
--

**LIMON, CO – ACCOMMODATIONS**

- Quality Inn.....(719) 775-0277
  - Special Rate \$89.00 Mention Lasater Sale
- Holiday Inn Express.....(719) 775-9033
  - Special Rate \$99.00 Mention Lasater Sale
- Comfort Inn.....(719) 775-2752
  - Special Rate \$99.00 Mention Lasater Sale
- La Quinta.....(719) 892-7440
  - Special Rate \$109.00 Mention Lasater Sale

**COLORADO SPRINGS, CO – NEAR THE  
AIRPORT**

Holiday Inn Express.....(719) 592-9800  
Hilton Garden Inn.....(719) 622-0300  
Best Value Inn.....(719) 574-7707

***The Dale Lasater Ranch retains the semen  
rights on all the retired herd sires.  
Buyers may collect semen for their own use.***

## **Schedule:**

### **Thursday, September 9th**

1:00 PM– Lunch

2:00 PM– Larry Buster Arrives

Afternoon – Bull and Cow viewing

### **Friday, September 10th -**

#### **Contract Female Selection and Field Day**

7 AM – Coffee and Breakfast at Remuda Pens

8 AM – Bred Female Contract Selection and  
Private Treaty Offering – Remuda  
Pens

12 Noon – Lunch at Matheson Civic Center –  
across Main St. from Post Office

1:23 PM – Retired Herd Sire Auction at  
Remuda Pens

1:35 PM – Private Treaty Bulls Menu Priced -  
Possible Shoot out - Remuda Pens  
- Ranchland Purebred BM Bulls  
- Foundation 3-year olds  
- Ranchlands 3-year olds

2:30 PM – Field Day -

Alex Lasater speaking on Foundation  
Beefmaster Updates

Cattle Viewing

4 PM – Sale Bull Viewing

5:30 PM – Steak Dinner at Matheson Civic  
Center

### **Saturday, September 11th –**

#### **Production Sale**

7 AM – Coffee and Breakfast at Remuda  
Pens

9 AM – Office open at Remuda Pens for  
Buyer's to receive numbers

10 AM – Bull Sale at Remuda Pens

Lunch will be served following the  
sale



### **What is Selling When?**

Cows:	Friday morning
Herd Sires:	Friday after Lunch
16 month old Bulls:	Friday after Herd Sires. Menu priced; Shoot Out
Foundation 3-yr olds:	Friday afternoon Menu priced; Shoot out
Ranchlands 3-yr olds:	Friday afternoon Menu priced; Shoot out
Foundation 2-yr olds:	Saturday Morning 10 am in person & live on internet with DV Auction
Ranchlands 2-yr olds:	Saturday Morning 11 am in person & live on internet with DV Auction

## **AUCTION FORMAT**

Ranch Auction: Although our Sale has an auction format, it has no fast-talking auctioneer. Every bull will have a base price of \$2,400. When it is time to sell a bull, we will ask those who are interested, at the base price, to raise their buyer number. If there is only one number in the air, the bull will be sold to that number at the base price. If there is more than one number in the air, we will increase the price in \$200 increments until only one number remains. This provides a very simple way to purchase bulls. In the event of a tie bid, when the last two (or more) buyer numbers drop out at the same time, we give the bid to the bidder with the lowest buyer number. The other bidder(s) will then be asked to increase the bid \$100 to stay in the auction. If the bid is increased, then the bidder with the lowest buyer number can raise the bid another \$100, and so on. Basically, we will have a traditional auction between the two (or more) bidders who dropped out at the same time.

## **FOUNDATION BEEFMASTERS SHOOT OUT FORMAT**

We will have multiple pens of menu priced bulls available for purchase. When there is a bull with multiple interested parties, we will hold what we call a Shoot Out. We will begin with all interested parties involved at the listed menu price and increase the price by \$100.00 increments until finally there is only one person remaining. That person will then commit to the final price reached.

## **CATTLE TRANSPORTATION**

A \$0.12 per mile credit will be given on each bull purchased in the sale based on the distance you live from the Lasater Ranch. For example, if you live in Lubbock TX, 475 miles from the ranch and you purchase two bulls in the sale, you would be credited \$114.00 (57.00 for each bull) off the purchase price of the bulls when you settle up after the sale. This credit applies only to bulls that sell on sale day. It does not apply to females or calves that sell private treaty during the field day and sale. If you are willing to haul cattle in addition to your own, please let us know. Also, if you need help finding transportation for cattle back to your area, feel free to contact us.

**\*\*\*FREE DELIVERY OF BULLS\*\*\***  
**to central locations near you in the**  
**Continental United States with the**  
**purchase of 5 or more bulls.**



## Pictures from Sedgwick County





# **Performance Data and** **Measurements**

## **ACTUAL AND ADJUSTED WEIGHTS**

Actual birth weights, weaning weights, and yearling weights are given for each bull. The 285-day and 365-day adjusted weights listed in the catalog do not include any adjustments for age of dam. These adjusted weights will not appear on the breeding certificates of the bulls.

## **RATIOS**

The 285-day weight and 365-day weight ratios show how an individual bull compares with his contemporaries. Bulls out of two-year-old dams represent one contemporary group. The bulls out of mature cows represent another contemporary group. A ratio of 100 is average while a ratio of 105 is 5% above herd average and a ratio of 95 is 5% below herd average.

## **ADG**

Average Daily Gain. The bulls were developed solely on native range. The test consisted of 154 days between the actual weaning weight and actual yearling weight. The total pounds gained as well as average daily gain are listed in the catalog. This type of development demonstrates a bull's ability to efficiently convert native forage into pounds of beef.

## **YEARLING REA AND IMF**

We have yearling measurements for Rib Eye and Intermuscular Fat, which coincides with the Beefmaster association's requirements for developing future carcass EPDs. Keep in mind; these measurements were taken when the bulls were yearlings, running on grass pastures. These measurements should be used on a comparison basis, paying more attention to ratios.

## **SCROTAL CIRCUMFERENCE**

Dr. Colin Durham of Colorado Veterinary Clinic took the actual scrotal measurements listed in the catalog in early August. All bulls have passed a breeding soundness exam and will be sold with same.

## **EPDs**

Expected Progeny Differences. We are publishing current EPDs in the sale catalog, when available, for all of our sale bulls. EPDs are a prediction of future progeny performance based on performance information currently available. Beefmaster Breed EPDs and Averages: Birth Weight: -5.2, Weaning Weight: 22.6, Yearling Weight: 37.8, Milk: 10.1, Maternal Calving Ease: 1.2, Maternal Wean Weight (previously Total Maternal): 21.4, and Scrotal Circumference: 0.9.

# **How Foundation Beefmaster® Herd Sires are Selected**

Each August we select approximately fifteen bulls from the yearling crop to add to our bull battery. We select the most complete bulls that best exemplify the Six Essentials. Each subsequent year we re-evaluate the bulls, and with the young bulls coming into the herd, about one-third of the bull battery rotates out. The few that make it to the age of four are automatically offered in our annual sale.

## **The Retired Herd Sires in this Offering**

We are offering ten 2 to 4-year-old retired herd sires in an impromptu auction on Friday at 1:23 P.M. Bidding will start at \$4,500.

**The Dale Lasater Ranch retains the semen rights on all retired herd sires. Buyers are permitted to collect for their own use.**

## **Breeding Soundness Evaluations**

All animals sold at our Sale and Auction are guaranteed sound, bred and with a Breeding Soundness Exam by Dr. Colin Durham, of Colorado Veterinary Clinic. Please have your vet test your bulls and cows/heifers soon after arriving at their new home to corroborate.

# Friday Auction

## Retired Herd Sires



7023						
Color	RMF			BBU	C1095850	
Birth Date	5/30/17			Birth WT	69	
WN WT	534			YR WT	778	
285 Day WT	560			285 WT Ratio	99	
365 Day WT	688			365 WT Ratio	102	
WN-YR Gain	244			WN-YR ADG	1.73	
8/5/21 WT	1840			S.C.	42	
REA	9.3			REA Ratio	118	
IMF	1.12			IMF Ratio	78	
Sire No.	5367			Dam No.	5276	
EPDs	BW	WW	YW	M	MWWT	S.C.
	0.0	19.7	36.1	8.4	18.3	0.3

**This bull was sired by our most prolific herd sire, Lasater 5367. Lasater 7023 sired 6 bull calves in 2019 and 5 bull calves in 2020 including two of our keep bulls this year. He is the sire to our other herd sire being offered: Lasater 9037 and Lot 14 in the auction.**

# Friday Auction

## Retired Herd Sires



7059						
Color	R	BBU C1095863				
Birth Date	6/6/17	Birth WT 72				
WN WT	504	YR WT 750				
285 Day WT	542	285 WT Ratio 95				
365 Day WT	674	365 WT Ratio 100				
WN-YR Gain	246	WN-YR ADG 1.74				
8/5/21 WT	1914	S.C. 47				
REA	6.9	REA Ratio 87				
IMF	1.44	IMF Ratio 101				
Sire No.	5791	Dam No. 5731				
EPDs	BW	WW	YW	M	MWWT	S.C.
	1.4	21.0	45.0	8.5	19.0	0.2

**This bull sired Lot 19 in our auction along with 6 bull calves in 2020; 4 of which are selling this year. Another is in our 2021 yearling keep bull group.**

# Friday Auction

## Retired Herd Sires



7062						
Color	R	BBU C1095864				
Birth Date	6/4/17	Birth WT 57				
WN WT	518	YR WT 732				
285 Day WT	553	285 WT Ratio 97				
365 Day WT	655	365 WT Ratio 97				
WN-YR Gain	214	WN-YR ADG 1.52				
8/5/21 WT	1770	S.C. 46				
REA	7.0	REA Ratio 88				
IMF	.79	IMF Ratio 55				
Sire No.	5921	Dam No. 5162				
EPDs	BW	WW	YW	M	MWWT	S.C.
	-1.8	11.6	29.0	8.8	14.6	0.2

**Grand Sire to this bull was Lasater 2917. He sired 7 bull calves in 2017, 17 bull calves in 2016 and 13 bull calves in 2015.**

# Friday Auction

## Retired Herd Sires



7063						
Color	R	BBU C1095866				
Birth Date	7/16/17	Birth WT 79				
WN WT	474	YR WT 790				
285 Day WT	600	285 WT Ratio 106				
365 Day WT	788	365 WT Ratio 117				
WN-YR Gain	316	WN-YR ADG 2.24				
8/5/21 WT	1764	S.C. 42.5				
REA	7.5	REA Ratio 104				
IMF	1.65	IMF Ratio 116				
Sire No.	5261	Dam No. 5126				
EPDs	BW	WW	YW	M	MWWT	S.C.
	1.3	18.6	46.6	6.6	15.9	0.2

**Lasater 7063 sired 5 bull calves in 2020  
including a bull we selected as a keep bull  
this year.**



# Friday Auction

## Retired Herd Sires



7082						
Color	LRWF			BBU	C1095870	
Birth Date	5/29/17			Birth WT	81	
WN WT	562			YR WT	744	
285 Day WT	587			285 WT Ratio	103	
365 Day WT	656			365 WT Ratio	98	
WN-YR Gain	182			WN-YR ADG	1.29	
8/5/21 WT	N/A			S.C.	44	
REA	6.8			REA Ratio	85	
IMF	.77			IMF Ratio	54	
Sire No.	5367			Dam No.	5072	
EPDs	BW	WW	YW	M	MWWT	S.C.
	-0.2	16.7	36.9	10.5	18.8	0.2

**Lasater 7082 was another bull sired by our most prolific bull ever. He sired Lasater 9052 in the commercial pen.**

## Friday Auction Retired Herd Sires



8293						
Color	BRINDLE			BBU	C1111094	
Birth Date	6/4/18			Birth WT	83	
WN WT	608			YR WT	768	
285 Day WT	621			285 WT Ratio	112	
365 Day WT	699			365 WT Ratio	107	
WN-YR Gain	160			WN-YR ADG	1.31	
8/5/21 WT	1770			S.C.	37	
REA	9.1			REA Ratio	116	
IMF	1.18			IMF Ratio	75	
Sire No.	M			Dam No.	7503	
EPDs	BW	WW	YW	M	MWWT	S.C.
	0.1	20.6	39.0	8.6	18.9	0.3

# Friday Auction

## Retired Herd Sires



<b>8301</b>						
Color	R			BBU	C1111095	
Birth Date	5/30/18			Birth WT	78	
WN WT	578			YR WT	834	
285 Day WT	580			285 WT Ratio	104	
365 Day WT	750			365 WT Ratio	115	
WN-YR Gain	256			WN-YR ADG	2.1	
8/5/21 WT	1662			S.C.	42.5	
REA	6.7			REA Ratio	83	
IMF	1.24			IMF Ratio	78	
Sire No.	4283			Dam No.	7454	
EPDs	BW	WW	YW	M	MWWT	S.C.
	-0.5	25.4	53.8	8.5	21.2	0.4

**This bull sired Private Treaty Bull Lasater 0170. He also sired 4 bull calves in 2020, including a bull we selected for our 2021 yearling keep bull group.**

# Friday Auction

## Retired Herd Sires



<b>8519</b>						
Color	R			BBU	C1111157	
Birth Date	6/11/18			Birth WT	63	
WN WT	598			YR WT	728	
285 Day WT	627			285 WT Ratio	113	
365 Day WT	674			365 WT Ratio	103	
WN-YR Gain	130			WN-YR ADG	1.07	
8/5/21 WT	1850			S.C.	36	
REA	9.1			REA Ratio	115	
IMF	1.02			IMF Ratio	65	
Sire No.	3795			Dam No.	3167	
EPDs	BW	WW	YW	M	MWWT	S.C.
	-3.5	24.3	41.5	8.4	20.6	0.7

**You could use Lasater 8519's top-line as a level. This bull was sired by Lasater 3795, a very prolific bull for us. Lasater 3795 sired 17 bull calves in 2018, 13 bull calves in 2017, 12 bull calves in 2016 and 10 bull calves in 2015.**

# Friday Auction

## Retired Herd Sires



9037						
Color	R	BBU C1125222				
Birth Date	6/12/19	Birth WT 56				
WN WT	510	YR WT 656				
285 Day WT	606	285 WT Ratio 107				
365 Day WT	599	365 WT Ratio 103				
WN-YR Gain	146	WN-YR ADG 1.2				
8/5/21 WT	1202	S.C. 34.5				
REA	7.7	REA Ratio 107				
IMF	N/A	IMF Ratio N/A				
Sire No.	7023	Dam No. 7960				
EPDs	BW	WW	YW	M	MWWT	S.C.
	-3.1	22.0	36.9	8.5	19.5	0.6

Sired by the very impressive herd sire  
Lasater 7023 who is also selling this year.



# Friday Auction

## Retired Herd Sires



9306						
Color	R			BBU	C1125145	
Birth Date	6/1/19			Birth WT	72	
WN WT	532			YR WT	756	
285 Day WT	604			285 WT Ratio	102	
365 Day WT	657			365 WT Ratio	107	
WN-YR Gain	224			WN-YR ADG	1.84	
8/5/21 WT	1240			S.C.	39.5	
REA	8.0			REA Ratio	104	
IMF	2.17			IMF Ratio	87	
Sire No.	M			Dam No.	1536	
EPDs	BW	WW	YW	M	MWWT	S.C.
	-2.0	11.8	30.5	8.2	14.1	0.2

**Lasater 9306 is very similar phenotypically to 8519.**



**2021 DALE LASATER RANCH PRODUCTION SALE  
FOUNDATION BEEFMASTERS  
2 YEAR OLD BULLS**

		2/7/20										8/10/20																			
		BBU	Sire	Dam			Wean	285	285	YR	Wn-Yr		Wn-Yr	365	365	Weight	SC	EPDs				MW		365		REA					
LOT	ID	Cert#	ID	ID	Color	BD	BW	WT	WT	Ratio	WT	SC	Gain	ADG	WT	Ratio	8/1/21	8/1/21	BW	WW	YW	M	MCE	WT	REA	REA	Ratio				
1	9502	C1125174	5260	2916	R	06/02/19	89	496	565	96	630	30.0	134	0.84	561	91	1195	39.0	0.6	12.7	30.0	8.5	3.5	14.8	8.6	7.66	114				
2	9357	C1125161	6374	3425	BRIN WF	06/09/19	83	580	680	115	790	31.0	210	1.31	716	116	1250	37.5	1.2	20.0	41.3	9.2	4.6	19.2	7.7	6.97	104				
4	9421	C1124995	5260	2790	R	06/08/19	83	491	574	97	638	30.5	147	0.92	576	93	1185	32.0	1.0	18.6	36.5	9.4	2.8	18.7	8.3	7.50	112				
5	9527	C1125187	5719	5629	R	07/18/19	72	560	782	132	774	33.0	214	1.34	776	126	1180	38.5	0.8	42.2	59.1	9.8	3.1	30.9	9.1	9.13	136				
6	9317	C1125151	5260	4139	BLK	06/18/19	75	522	636	107	646	28.0	124	0.78	598	97	1105	39.0	1.4	29.4	35.9	10.8	2.6	25.5	6.5	6.02	90				
7	9607	C1125203	6374	9576	BRIN WF	06/11/19	89	452	535	90	622	25.0	170	1.06	566	92	1130	33.0	2.0	14.6	44.4	8.4	4.1	15.7	6.1	5.55	83				
9	9321	C1125153	6374	1659	BRIN	07/15/19	79	546	752	127	735	25.0	189	1.18	731	118	1190	32.0	0.7	18.2	29.5	9.2	4.2	18.8	7.4	7.36	110				
10	9205	C1124957	5076	4605	R	07/14/19	77	480	658	111	678	28.5	198	1.24	672	109	1170	34.5	-2.4	15.4	27.4	11.5	4.0	19.2	7.4	7.34	109				
11	9025	C1125217	7521	7531	BRIN	05/08/19	56	462	479	85	660	26.5	198	1.24	554	95	1030	35.0	-4.5	13.1	28.9	10.0	4.2	16.5	8.7	7.30	111				
12	9602	C1125204	5076	0237	R	06/14/19	67	480	575	97	670	29.0	190	1.19	614	100	1015	33.5	-3.6	9.4	27.9	8.0	3.9	12.8	6.9	6.33	94				
Bull Avg. out of Hfrs					AVG		72	478	561		646		167	1.05	583				-1	15	32.0	8.6	3.8	16	6.6						
Bull Avg. out of 3+Cows					AVG		77	502	592		680		177	1.11	617				0.5	12	33	8.6	3.8	16	6.7						

**2021 DALE LASATER RANCH PRODUCTION SALE  
FOUNDATION BEEFMASTERS  
2 YEAR OLD BULLS**

LOT	ID	BBU Cert#	Sire ID	Dam ID	Color	BD	BW	2/7/20			8/10/20			Wn-Yr				365		Weight		SC		EPDs				MW		365		REA	REA	Ratio
								Wean WT	285 WT	285 Ratio	YR WT	SC	Gain	ADG	WT	Ratio	8/1/21	8/1/21	BW	WW	YW	M	MCE	WT	REA									
13	9570	C1125198	5639	4019	DK R	06/13/19	83	511	609	103	650	32.0	139	0.87	595	96	1205	38.5	0.4	15.5	31.4	8.9	3.9	16.7	7.4	6.77	101							
14	9061	C1125228	7023	7095	R	06/05/19	71	454	524	93	592	31.0	138	0.86	531	91	1085	36.5	-0.5	14.4	35.5	8.6	3.5	15.8	6.8	6.10	93							
15	9320	C1125152	5720	8543	LT R	06/12/19	83	467	555	94	644	31.0	177	1.11	588	95	1270	39.0	-1.5	6.0	18.5	9.2	2.0	12.2	6.9	6.30	94							
16	9376	C1125171	5719	5673	LT R	06/06/19	83	510	591	100	672	28.0	162	1.01	604	98	1220	40.0	2.0	28.1	53.6	9.5	3.5	23.6	7.7	6.92	103							
17	9207	C1124966	M	3125	R	05/07/19	48	462	477	81	606	30.5	144	0.90	507	82	1153	32.0	-4.6	-5.3	3.1	6.9	4.5	4.2	7	5.86	87							
18	9275	C1125140	5076	3162	DK R	06/09/19	72	476	558	94	626	32.0	150	0.94	567	92	960	39.0	-2.8	10.0	31.3	7.8	4.3	12.8	6.9	6.25	93							
19	9012	C1124883	7059	7265	R	06/05/19	72	456	526	94	682	30.5	226	1.41	612	105	1185	39.0	-0.9	14.4	32.0	8.5	4.2	15.7	7.4	6.64	101							
21	9260	C1125036	5720	6405	DK R	06/09/19	67	482	565	95	638	28.0	156	0.98	578	94	1045	35.0	-1.7	8.8	21.5	8.9	3.8	13.3	6.6	5.98	89							
22	9274	C1125139	M	1739	DK R	06/11/19	83	584	691	117	822	30.0	238	1.49	748	121	1130	37.0	-0.1	25.5	49.8	9.6	3.3	22.4	7.6	6.92	103							
23	9345	C1125159	6205	3016	R	06/21/19	83	422	521	88	562	30.0	140	0.88	525	85	1135	37.5	-0.6	3.3	24.9	7.2	3.9	8.9	6	5.60	83							
Bull Avg. out of Hfrs					AVG		72	478	561		646		167	1.05	583				-1	15	32.0	8.6	3.8	16	6.6									
Bull Avg. out of 3+Cows					AVG		77	502	592		680		177	1.11	617				0.5	12	33	8.6	3.8	16	6.7									



**2021 DALE LASATER RANCH PRODUCTION SALE  
FOUNDATION BEEFMASTERS  
2 YEAR OLD BULLS**

		2/7/20										8/10/20																			
		BBU	Sire	Dam			Wean		285	285	YR	Wn-Yr		Wn-Yr	365	365	Weight	SC	EPDs				MW		365		REA				
LOT	ID	Cert#	ID	ID	Color	BD	BW	WT	WT	Ratio	WT	SC	Gain	ADG	WT	Ratio	8/1/21	8/1/21	BW	WW	YW	M	MCE	WT	REA	REA	Ratio				
24	9510	C1125178	6147	1695	DK R	06/01/19	72	467	530	90	618	30.0	151	0.94	549	89	1035	35.5	-2.6	-2.7	3.9	7.9	4.3	6.5	7.6	6.75	100				
25	9537	C1125192	4367	5769	DK R	05/31/19	89	532	602	102	732	34.5	200	1.25	648	105	1245	40.0	0.3	9.8	22.2	8.7	4.7	13.6	7.6	6.73	100				
26	9507	C1125177	M	3410	DK R	08/28/19	72	440	769	130	590	30.0	150	0.94	667	108	1020	36.5	-0.7	10.8	27.9	6.5	3.9	11.9	6.9	7.80	116				
27	9562	C1125195	4367	5102	R	07/01/19	72	412	531	90	586	32.0	174	1.09	561	91	1060	38.5	-1.9	0.9	18.2	8.1	3.9	8.5	6.8	6.51	97				
28	9367	C1125165	M	8531	R	07/05/19	70	454	596	101	740	26.0	286	1.79	716	116	1080	36.0	-2.1	5.4	14.5	10.3	3.3	13.0	7.1	6.87	102				
29	9305	C1125144	M	6327	R*	05/12/19	59	454	477	81	632	26.5	178	1.11	535	87	1210	34.0	-3.4	0.6	12.5	8.4	3.9	8.7	8.2	6.94	103				
31	9023	C1125216	7081	7329	R	07/03/19	72	510	664	118	658	29.0	148	0.93	634	109	1280	36.5	-1.2	25.3	37.3	8.6	4.4	21.2	7	6.74	103				
32	9215	C1124986	5639	4617	R	06/10/19	83	405	477	81	590	32.5	185	1.16	536	87	1150	38.0	0.5	6.9	28.2	8.1	3.4	11.5	7.3	6.63	99				
33	9203	C1124884	6205	6150	R	06/10/19	78	460	542	92	680	30.0	220	1.38	617	100	1195	37.5	-0.6	12.9	32.4	8.7	3.5	15.1	5.5	4.99	74				
35	9256	C1125034	5267	3756	LT R*	06/16/19	83	454	548	93	660	31.0	206	1.29	608	99	1175	36.0	1.6	18.5	43.7	10.3	3.6	19.6	8.2	7.56	112				
Bull Avg. out of Hfrs					AVG		72	478	561		646		167	1.05	583				-1	15	32.0	8.6	3.8	16	6.6						
Bull Avg. out of 3+Cows					AVG		77	502	592		680		177	1.11	617				0.5	12	33	8.6	3.8	16	6.7						

**2021 DALE LASATER RANCH PRODUCTION SALE  
FOUNDATION BEEFMASTERS  
2 YEAR OLD BULLS**

		2/7/20										8/10/20																			
		BBU	Sire	Dam			Wean	285	285	YR			Wn-Yr	Wn-Yr	365	365	Weight	SC	EPDs				MW		365		REA				
LOT	ID	Cert#	ID	ID	Color	BD	BW	WT	WT	Ratio	WT	SC	Gain	ADG	WT	Ratio	8/1/21	8/1/21	BW	WW	YW	M	MCE	WT	REA	REA	Ratio				
36	9307	C1125146	5260	1956	LT R	06/11/19	78	590	698	118	740	32.5	150	0.94	674	109	1290	38.5	-1.3	15.9	31.9	9.1	3.8	17.0	8.4	7.65	114				
37	9601	C1125200	5720	2901	R	06/10/19	83	612	721	122	746	30.0	134	0.84	677	110	1395	36.5	-3.2	0.5	13.6	7.2	4.2	7.5	8	7.26	108				
38	9621	C1125211	5719	5792	R	06/07/19	70	540	628	107	670	27.0	130	0.81	604	98	1340	38.0	0.9	34.1	46.0	9.6	3.7	26.7	6.6	5.95	89				
Bull Avg. out of Hfrs					AVG		72	478	561		646		167	1.05	583				-1	15	32.0	8.6	3.8	16	6.6						
Bull Avg. out of 3+Cows					AVG		77	502	592		680		177	1.11	617				0.5	12	33	8.6	3.8	16	6.7						

### 16 MONTH OLD BULLS - OFFERED FRIDAY @ 1:30 PM POSSIBLE SHOOTOUT

Bull ID	Sire ID	Dam ID	Color	BD	BW	3/1/21				7/20/21		141.0		684		7/29/21	365	REA	7/29/21	365	IMF	IMF	Ratio	PRICE
						205	Wean	285	285	YR	Wn-Yr	Wn-Yr	365	365										
0129	8596	8391	DUN	6/20/20	78	508	630	707	126	940	34.0	310	2.2	869	127	10.7	9.9	130	0.64	0.59	51	\$3,600.00		
0139	8596	8352	LR	6/17/20	72	451	566	628	112	880	31.5	314	2.2	807	118	8.6	7.9	104	0.37	0.34	29	\$3,600.00		
0170	8301	8395	LR	5/11/20	83	386	554	537	96	758	38.5	204	1.4	636	93	8.3	7.0	92	0.37	0.31	27	\$3,800.00		
0215	5267	7296	R	7/1/20	72	532	631	740	124	922	36.0	291	2.1	876	123	10.2	9.7	118	2.11	2.01	149	\$4,000.00		
0275	7059	5792	RMF	6/16/20	72	445	560	619	103	940	34.5	380	2.7	860	121	7.9	7.2	88	0.39	0.36	26	\$3,600.00		
0276	5720	2901	LR	6/6/20	89	500	654	695	116	890	33.0	236	1.7	794	112	8.7	7.8	95	2.11	1.88	139	\$4,800.00		
0293	7059	2316	R	5/30/20	89	455	610	632	106	922	39.0	312	2.2	809	114	10.3	9.0	110	0.58	0.51	38	\$4,200.00		
0312	7059	4615	BLK	5/25/20	83	486	664	676	113	916	36.0	252	1.8	794	112	10.4	9.0	110	0.59	0.51	38	\$4,000.00		
0319	7095	4629	R	6/25/20	72	464	564	646	108	984	36.5	420	3.0	921	130	9.5	8.9	108	1.59	1.49	110	\$3,600.00		
0329	7023	0529	R	6/4/20	78	415	546	576	96	884	37.0	338	2.4	785	110	10.0	8.9	108	2.07	1.84	136	\$3,800.00		
Bull Avg. out of Hfrs					Averages	76	405	556	547	793		270	1.9	684		9.1	7.6		1.35	1.16				
Bull Avg. out of 3+Cows					Averages	80	431	574	598	820		259	1.8	723		9.3	8.2		1.53	1.35				



# 16 MONTH OLD BULLS - OFFERED FRIDAY @ 1:30 PM POSSIBLE SHOOTOUT

Bull ID	Sire ID	Dam ID	Color	BD	3/1/21					7/20/21			141.0		684		7/29/21	365	REA	7/29/21	365	IMF	PRICE
					BW	WT	WT	WT	Ratio	WT	SC	Gain	ADG	WT	Ratio								
0351	7081	9468	DRMF	5/28/20	75	431	582	599	100	952	31.0	370	2.6	831	117	8.7	7.6	93	1.34	1.17	87	\$3,800.00	
0359	6172	(08) 8424	RMF	5/12/20	78	438	626	609	102	944	33.5	318	2.3	794	112	8.7	7.3	89	2.16	1.82	135	\$4,000.00	
0369	6147	5790	R	6/5/20	83	422	554	587	98	822	31.0	268	1.9	732	103	9.7	8.6	105	2.15	1.91	142	\$3,600.00	
0371	5267	3210	DUN	6/4/20	89	431	568	600	100	904	35.0	336	2.4	803	113	8.9	7.9	96	2.53	2.25	166	\$3,800.00	
0375	7085	3926	BRIN	6/4/20	78	486	640	676	113	896	38.5	256	1.8	796	112	10.4	9.2	113	1.02	0.91	67	\$4,600.00	
0517	6374	3506	R	6/10/20	94	485	624	674	113	950	34.0	326	2.3	856	120	9.7	8.7	107	1.61	1.45	107	\$4,200.00	
0523	7081	0275	R	5/28/20	89	405	547	563	94	792	30.0	245	1.7	692	97	9.8	8.6	104	0.82	0.72	53	\$4,700.00	
Bull Avg. out of Hfrs					Averages	76	405	556	547	793		270	1.9	684		9.1	7.6		1.35	1.16			
Bull Avg. out of 3+Cows					Averages	80	431	574	598	820		259	1.8	723		9.3	8.2		1.53	1.35			



### Ranchlands Purebred Beefmaster Bulls - Floor Price \$2000

		8/31/21 8/31/21		
<u>LOT</u>	<u>ID</u>	<u>Color</u>	<u>WT</u>	<u>SC</u>
51	9019	R	1220	37
52	9213	R	1225	39
53	9148	R	1105	36.5
54	9115	R	1155	35
55	9454	DUN	1210	36.5
56	9485	R	1190	40
58	9457	R PAINT	1235	34
59	9458	RMF	1255	34.5
60	9222	R	1160	37.5
61	9220	R	1130	35

		8/31/21 8/31/21		
<u>LOT</u>	<u>ID</u>	<u>Color</u>	<u>WT</u>	<u>SC</u>
62	9012	R	1125	34
63	9464	R	1060	34
64	9077	LR	1075	36
65	9095	LR	1040	37
66	9475	R	1065	32
67	9145	RWF SOX	1200	40
68	9481	LR	1000	32
69	9461	R W TIP	1185	38
70	9008	RWF	1060	34
72	9227	R*	1050	37

		8/31/21 8/31/21		
<u>LOT</u>	<u>ID</u>	<u>Color</u>	<u>WT</u>	<u>SC</u>
75	9225	LR	1020	37.5

We are pleased to include some great Beefmaster bulls from Ranchlands (the Phillips Family) , whose Beefmasters come only from the Foundation Herd of the breed. They run their cattle with no pampering / they don't pull calves or help heifers.

These can go anywhere and hit the ground running. **These bulls are not registered.**

## Two of our more prolific sires in the fall of 2018



**5076**

<i>Color</i>	<i>R</i>	<i>BBU</i>	<i>C1065061</i>
<i>Sire</i>	<i>3270</i>	<i>Dam</i>	<i>3025</i>
<i>Birth Date</i>	<i>6/3/15</i>	<i>Birth WT</i>	<i>50</i>
<i>WN WT</i>	<i>528</i>	<i>YR WT</i>	<i>867</i>
<i>WN-YR Gain</i>	<i>283</i>	<i>S.C.</i>	<i>34</i>
<b><i>Offspring Lot # 10, 12 &amp; 18</i></b>			



**5260**

<i>Color</i>	<i>R</i>	<i>BBU</i>	<i>C1065206</i>
<i>Sire</i>	<i>2531</i>	<i>Dam</i>	<i>0168</i>
<i>Birth Date</i>	<i>6/13/15</i>	<i>Birth WT</i>	<i>85</i>
<i>WN WT</i>	<i>676</i>	<i>YR WT</i>	<i>1016</i>
<i>WN-YR Gain</i>	<i>340</i>	<i>S.C.</i>	<i>42</i>
<b><i>Offspring Lot # 1, 4, 6 &amp; 36</i></b>			

**REFERENCE HERD SIRES**  
**2014 MODELS**

<b>OFFSPRING</b>		<b><u>LOT #</u></b>	<b><u>CERT #</u></b>	<b><u>SIRE</u></b>	<b><u>DAM</u></b>	<b><u>COLOR</u></b>	<b><u>BD</u></b>	<b><u>BW</u></b>	<b><u>WN WT</u></b>	<b>WN-YR</b>	<b>YR</b>	<b>WT</b>	<b>WT</b>	<b>WT</b>	<b>WT</b>	<b>MAT.</b>
										<b><u>GAIN</u></b>	<b><u>2015</u></b>	<b><u>2016</u></b>	<b><u>2017</u></b>	<b><u>2018</u></b>	<b><u>2019</u></b>	<b><u>S.C.</u></b>
Retired 4367		25 & 27	C1051872	0132	8456	R	6/7/14	64	621	371	992	1260	1570	1725	2040	44

**2015 MODELS**

<b>OFFSPRING</b>		<b><u>LOT #</u></b>	<b><u>CERT #</u></b>	<b><u>SIRE</u></b>	<b><u>DAM</u></b>	<b><u>COLOR</u></b>	<b><u>BD</u></b>	<b><u>BW</u></b>	<b><u>WN WT</u></b>	<b>WN-YR</b>	<b>YR</b>	<b>WT</b>	<b>WT</b>	<b>WT</b>	<b>WT</b>	<b>MAT.</b>
										<b><u>GAIN</u></b>	<b><u>2016</u></b>	<b><u>2017</u></b>	<b><u>2018</u></b>	<b><u>2019</u></b>	<b><u>2020</u></b>	<b><u>S.C.</u></b>
Retired 5076	10, 12 & 18		C1065061	3270	3025	R	6/3/15	50	528	283	867	N/A	N/A	NLIH	NLIH	34
Retired 5260	1, 4, 6 & 36		C1065206	2531	0168	R	6/13/15	85	676	340	1016	1410	1625	1845	NLIH	42
Retired 5267	35		C1065209	2063	2907	LR	6/22/15	86	548	277	867	1154	1521	1785	1922	46.5
Retired 5639	13 & 32		C1065302	2370	0369	BLK	6/18/15	81	585	182	767	1265	1500	2015	1966	45
Retired 5719	5, 16 & 38		C1065320	2531	7154	RMF	7/2/15	64	672	282	954	1515	1750	2170	NLIH	45
Retired 5720	15, 21 & 37		C1065321	2531	9146	R	6/4/15	87	656	251	907	1440	1670	N/A	2044	41

NLIH = No Longer In Herd

## REFERENCE HERD SIRES

### 2016 MODELS

OFFSPRING									WN-YR	YR	WT	WT	WT	MAT.
	<u>LOT #</u>	<u>CERT #</u>	<u>SIRE</u>	<u>DAM</u>	<u>COLOR</u>	<u>BD</u>	<u>BW</u>	<u>WN WT</u>	<u>GAIN</u>	<u>2017</u>	<u>2018</u>	<u>2019</u>	<u>2020</u>	<u>S.C.</u>
Retired 6147	24	C1079563	2370	2061	R	4/4/16	70	672	254	926	1230	1470	1600	42
Retired 6205	23 & 33	C1079590	2370	2756	DR	5/28/16	71	578	309	892	1225	1645	NLIH	41
Retired 6374	2, 7 & 9	C1079661	1930	0234	BRN BRN	4/10/16	88	730	215	945	N/A	N/A	1960	42

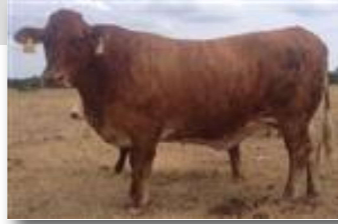
### 2017 MODELS

OFFSPRING									WN-YR	YR	WT	WT	MAT.
	<u>LOT #</u>	<u>CERT #</u>	<u>SIRE</u>	<u>DAM</u>	<u>COLOR</u>	<u>BD</u>	<u>BW</u>	<u>WN WT</u>	<u>GAIN</u>	<u>2017</u>	<u>2018</u>	<u>2019</u>	<u>S.C.</u>
Retiring 7023	3 & 14	C1095850	5367	5276	RMF	5/30/17	69	534	244	778	1040	1447	42
Retiring 7059	19	C1095863	5791	5731	R	6/6/17	72	504	246	750	1160	1646	42
Retired 7081	31	C1095869	5719	5172	R	6/9/17	65	570	210	780	1105	1644	40.5
Retired 7521	11	C1096104	4281	6356	R	6/3/17	57	604	194	798	NLIH	NLIH	32

NLIH = No Longer In Herd

## Embryos Available

### Lasater Beefmaster 6369



A 2006 model, Lasater 6369 is highly fertile and functional. The ideal cow in a multi-trait selection program. We have embryos from her by Lasater 8208.



### Lasater Beefmaster 9720

A 1999 model, Lasater 9720 is a Pacesetter within BBU. The qualifications of the Pacesetter program require a female to have her first calf on time, produce a calf that is the near the top of its contemporary group, and continue to do so in future production years. The Pacesetter program is designed to recognize hard-working, productive cows. We have embryos from her by Lasater 8208, Lasater 0192 & Lasater 7261.

### Lasater Beefmaster 3795

A 2003 model, Lasater 3795 is highly fertile and functional. The ideal cow in a multi-trait selection program. Before deciding to flush Lasater 3795, she was raising her 8th consecutive calf. We have embryos from her by Lasater 0192.

**NO PICTURE OF  
3795  
AVAILABLE**

**Lasater Beefmaster 0192  
Sire to these  
Embryos**





## Semen Available from these Foundation Beefmaster Herd Sires

### Lasater Beefmaster 5367



Foundation 5367, is our most prolific bull ever. Born in 2015 from a 10 year old dam, in his first year of service, he sired 32 calves. A typical outstanding bull may sire 15 - 20 calves. When we chose him as a yearling we were impressed with his muscling at such a young age. At age two, although he was very active during the breeding season, had a significant weight gain. Our fourteen 2018 yearling keep bulls, who were born in 2017, include three bulls sired by him; two of whom had well above average gains over the summer. **Exportable**

### Lasater Beefmaster 0192



Lasater Beefmaster 0192 was noticed early in his career and quickly became one of our elite AI Sires, and as a result he has been widely used all around the world. You can't imagine a more massive, powerful, heavily muscled, attractive bull than Lasater Beefmaster 0192. As a yearling, he was the most prolific breeder among the 2000 models. Five of his sons have been selected as Lasater Herd Sires.



## Semen Available from these Foundation Beefmaster Herd Sires

### Lasater Beefmaster 5096



Lasater 5096 is a 1995 model out of a two-year-old dam and has the conformation and performance that will never go out of style. He combines two characteristics that don't always go hand-in hand: power and style. He is massive, larger-boned, heavily muscled, and yet he is smooth made, sound, correct, and naturally athletic. He has been widely used in the U.S. and Mexico with great success.

### Lasater Beefmaster 4248



Lasater 4248 is one of our newest addition to our A.I. lineup. Like Lasater 3705, he is also out of a proven 8-year-old dam. He shares the same breed-leading capacity, phenotype and attractive muscle pattern of his sire, Lasater 1526. He is certainly one of 1526's best sons, if not the best, and that is saying a lot. As a two-year-old, we were not surprised to find out that he had one of the largest Ribeye Areas, 16.9. His first sons sold in our 2008 sale.

## Semen Available from these Foundation Beefmaster Herd Sires

### Lasater Beefmaster 8208



Sired by one of our most prolific semen sires 4290; who sired 6 outstanding Foundation Herd Bulls. He is long and well-muscled, the way he is built stands out in a group. As a three year old he was well ahead of his peers in scrotal measurement. He sired by far the most calves born in 2012..... 33 bull calves: 15 had IMF ratios of over 100, 12 had REA ratios of over 100, 14 had yearling ratios averaging 105

### Lasater Beefmaster 4290



Lasater 4290 is proving to be one of the best herd sires that we've raised in quite a while. As a two-year-old, he was the most prolific among his multiple-sire group, leaving 13 sons. Those 13 sons had an average weaning weight ratio of 107 and yearling weight ratio of 103. And then he did it again as a three year old, leaving 12 sons with an average weaning weight ratio of 109 and yearling weight ratio of 106. **Exportable.**

# A VERY HEARTFELT THANKS!

We appreciate those who  
bought for the first time in  
2020 and we gratefully  
acknowledge those who  
have been buying  
Foundation Beefmasters for  
twenty, thirty, and even  
sixty years.



